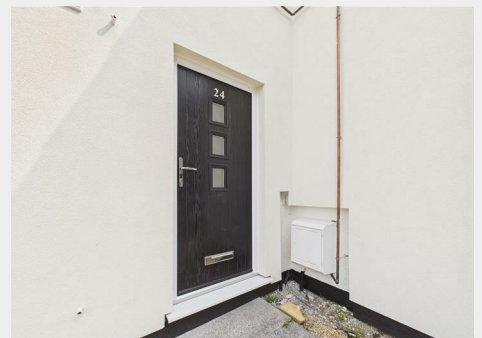
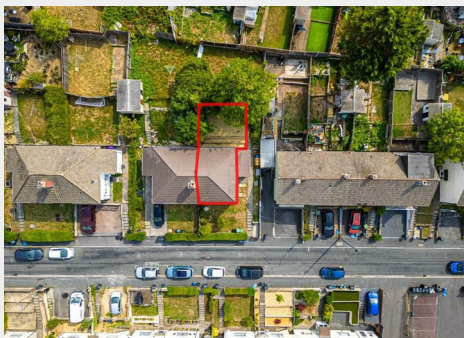


24 Dutton Road, Whitchurch, Bristol, BS14 8BW

Sold @ Auction £120,000



- FOR SALE BY ONLINE AUCTION
- WEDNESDAY 19TH NOVEMBER 2024
- VIRTUAL TOUR NOW ONLINE
- VIEWINGS – REFER TO DETAILS
- LEGAL PACK COMPLETE
- SOLD @ NOVEMBER LIVE ONLINE AUCTION
- LEASEHOLD GARDEN FLAT
- 1 BED | VACANT
- REDUCED - WAS £150K
- EXTENDED 8 WEEK COMPLETION

Hollis Morgan – NOVEMBER LIVE ONLINE AUCTION – A Leasehold 1 BED GROUND FLOOR FLAT (426 Sq Ft) with PRIVATE REAR GARDEN | Reduced auction - was £150k

24 Dutton Road, Whitchurch, Bristol, BS14 8BW

Accommodation

FOR SALE BY LIVE ONLINE AUCTION

*** SOLD @ NOVEMBER LIVE ONLINE AUCTION ***

GUIDE PRICE RANGE £100,000 - £130,000
SOLD @ £120,000

ADDRESS | 24, Dutton Road Whitchurch, Bristol, BS14 8BW

Lot Number 24

*** PLEASE NOTE NEW AUCTION START TIME - NOW 12:00 ***

The Live Online Auction is on Wednesday 19th November 2025 @ 12:00 Noon
Registration Deadline is on Friday 14th November 2025 @ 16:00

The Auction will be streamed LIVE ONLINE via the Hollis Morgan website & you can chose to bid by telephone, proxy or via your computer. Registration is a simple online process - please visit the Hollis Morgan auction website and click "REGISTER TO BID"

GUIDE PRICE RANGE

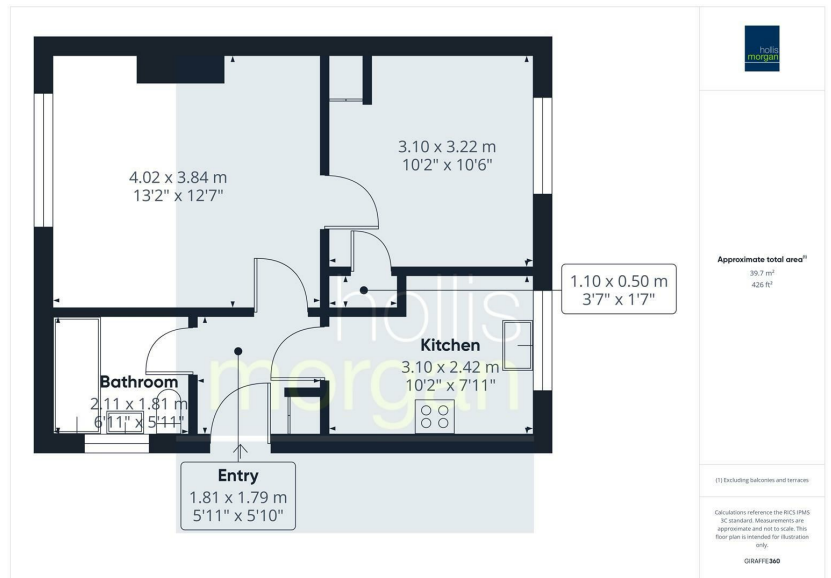
The vendors have issued a guide price range of £100,000 - £130,000 for this lot.

THE PROPERTY

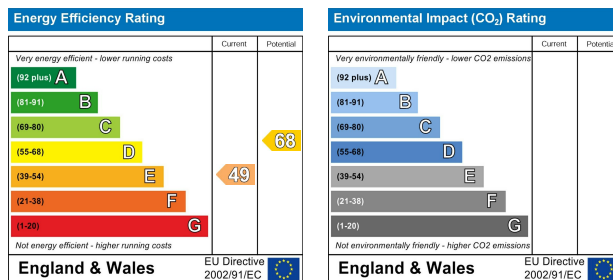
A Leasehold flat occupying the ground floor of this elevated semi detached house. The accommodation (426 Sq Ft) has a private entrance with separate kitchen, reception, bedroom and bathroom plus a private garden space to the rear.
Sold with vacant possession.

Tenure - Leasehold
Council Tax - Band A
EPC - E
Management Fees - £440 per annum
Lease length - 125 years from 1990

Floor plan



EPC Chart



9 Waterloo Street
Clifton
Bristol
BS8 4BT

Tel: 0117 973 6565
Email: post@hollismorgan.co.uk
www.hollismorgan.co.uk

Hollis Morgan Property Limited, registered in England, registered 7275716.
Registered address, 5 Upper Belgrave Road, Clifton, Bristol BS8 2XQ

Auction Property Details Disclaimer

Hollis Morgan endeavour to make our sales details clear, accurate and reliable in line with the Consumer Protection from Unfair Trading Regulations 2008 but they should not be relied on as statements or representations of fact.

Please refer to our website for further details.